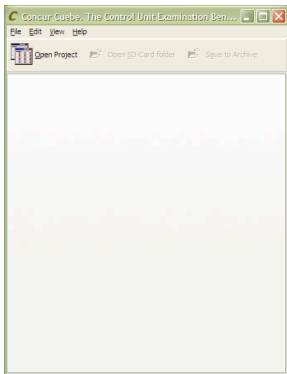
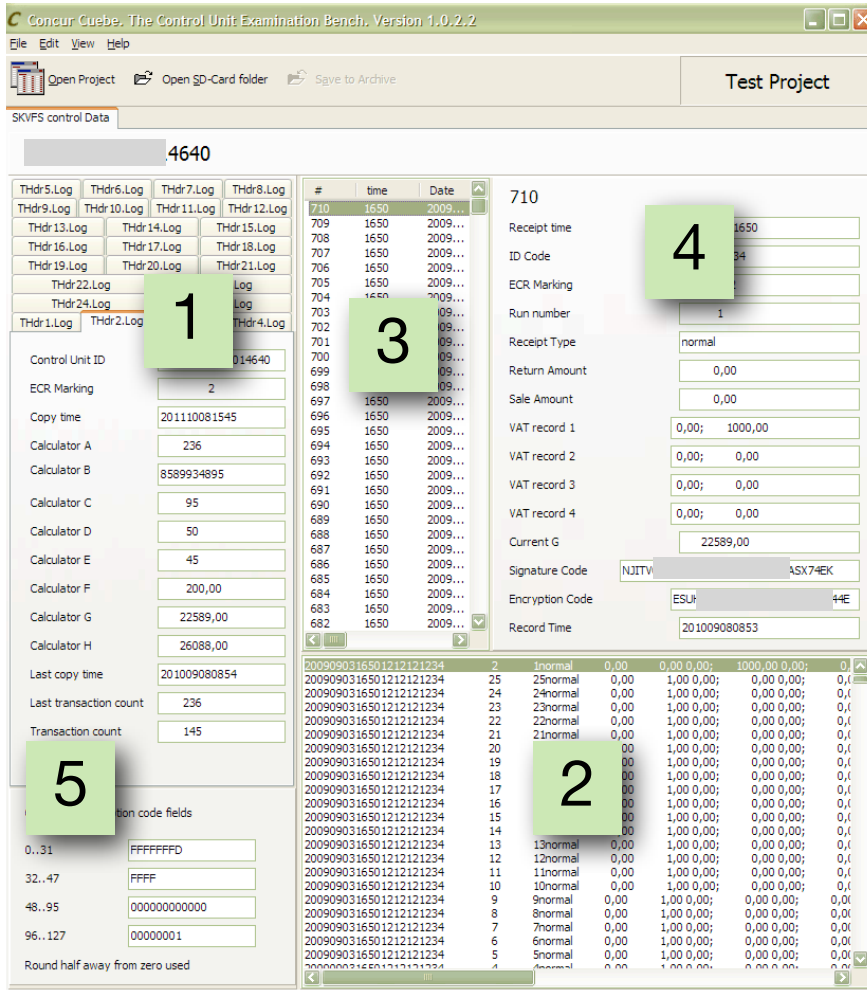


CONCUR CUEBE - TEST APPLICATION FOR SWEDISH TAX AGENCY CONTROL UNITS

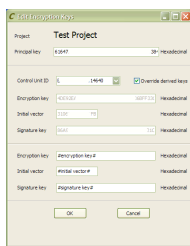


- Full insight into the data of the control unit.
- This tool has been used to certify several units on the swedish market..
- Easy encryption key management.
- Optimized for large files. Last entries shown first (No need to scroll to end)
- All data on one page (Header records in tabs and receipt entries in tabbular and record form)
- Proven to comply to SKVFS regulations.
- Live view: Select a receipt entry and the corresponding header record and raw and record view of entry is selected.



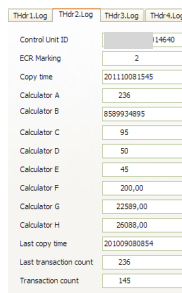
ALL ON ONE PAGE EASY TO NAVIGATE

1. The header pane contains one tab for each header file in the control unit data.
2. Each receipt entry is shown in raw format (last entry first for easy access)
3. Select an entry in the tabular view of receipt entries and the header data (1), Raw data (2) and entry record view (4) is automatically shown.
4. Record view of selected receipt entry.
5. Calculated Encryption Code fields shown when last receipt entry is selected. Enables examination of the contents of this field in the format defined in SKVFS regulations.



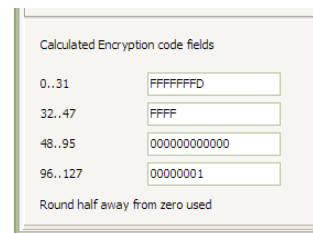
ENCRYPTION KEY DIALOG

Easy management of encryption keys. Generate the correct key from provided unit ID. Or override with a set of fixed keys to use (enables test of units with a key generated in a non standard way).



MULTIPLE HEADER SUPPORT

The application shows each header data in its own tab. And the correct tab is automatically selected when a receipt entry is selected.



REFERENCE ENCRYPTION CODE

A reference encryption code is calculated for the last receipt entry. May be used to examine that the control unit has generated the correct one.